

WKCDA Tower

Address: West Kowloon Cultural District, No.8 Austin Road West, Kowloon, Hong Kong



By MTR from Kowloon Station (Exit E4 or E5)

Step 1



Kowloon Station. Exit from Kowloon Station Exit E4 or E5 and turn left

Step 2



Walk around 2 to 3 minutes to reach Nga Cheung Road. You will find a road sign indicating the direction towards the West Kowloon Cultural District

Step 3



Walk along Nga Cheung Road for 1 minute and cross the road at the traffic light on the right-hand side

Step 4



Continue Walking past the stairs to the footbridge

Step 5



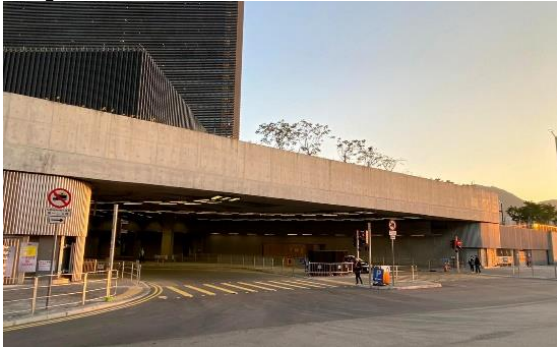
Cross the street and turn right. Please be reminded to cross safely at the marked area, looking to both sides before you walk!

Step 6



Keep walking along Museum Drive and turn left when you see the entrance of step 7

Step 7



Entrance of WKCDA Tower / M+ / Carpark

Step 8



Head to the escalators to go up to the podium

Step 9



Head straight towards WKCDA Tower (red arrow)

Step 10



Enter WKCDA Tower

Step 11



Take the lift or escalator and go up to 2/F where there are the concierge and lifts to go up to office floor

Step 12



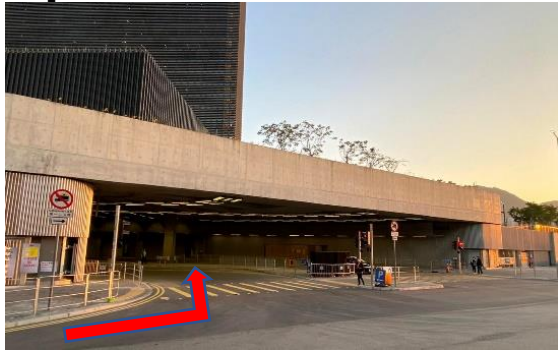
Please register on 2/F concierge desk.

By Taxi

Please have the taxi to go in the entrance described in **Step 7** above. And then follow **Step 8** to **Step 12**.

By Car

Step 1



Entrance of WKCDA Tower / M+ / Carpark

Step 2



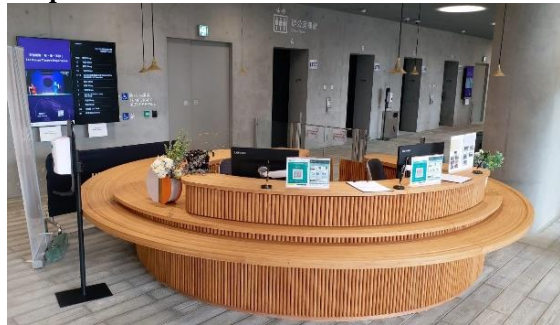
Go all the way in and you will see the car park vehicles entry/exit gate

Step 3



After parking, find the entrance as below photo and take the lift to 2/F

Step 4



Please register on 2/F concierge desk.